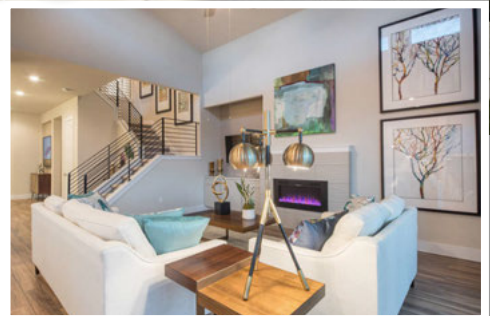
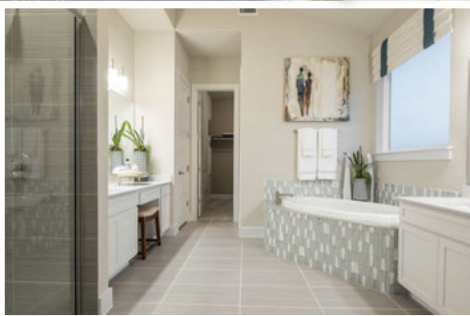
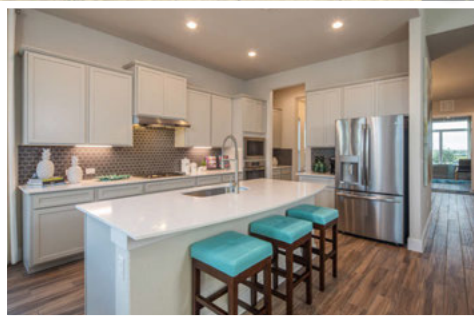




FROM THE \$250'S



- **In East Austin, Minutes from Downtown**
- **Floor Plans from 1,597 to 2,923**
- **Located Near Major Tech Employers**
- **Easy Access to 290, Parmer Lane & Hwy 130**

Visit Our Model!

11309 American Mustang Loop
Manor, TX 78653



Contact:

Robert Eckrich

RobertE@brohnhomes.com

(512) 387-7579

