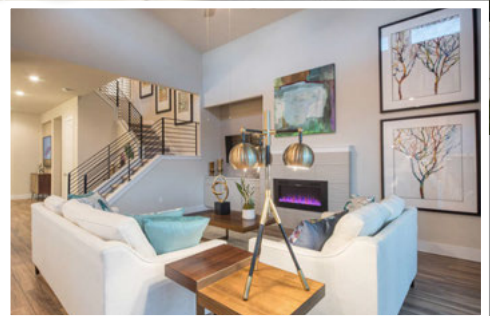
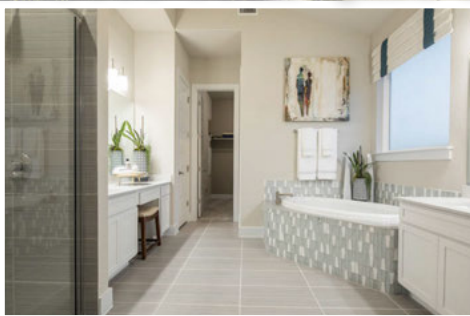
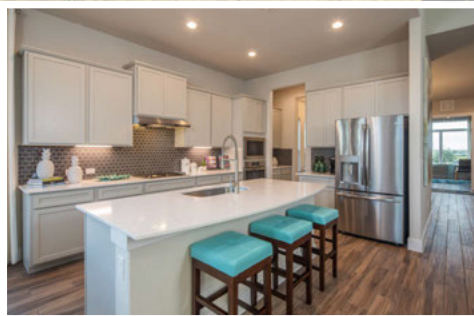




**FROM THE \$250'S**



- In East Austin, Minutes from Downtown
- Located Near Major Tech Employers
- Floor Plans from 1,597 to 2,923
- Easy Access to 290, Parmer Lane & Hwy 130

**Visit Our Model!**

11309 American Mustang Loop  
Manor, TX 78653



**Contact:**

**Robert Eckrich**

[RobertE@brohnhomes.com](mailto:RobertE@brohnhomes.com)

(512) 387-7579

