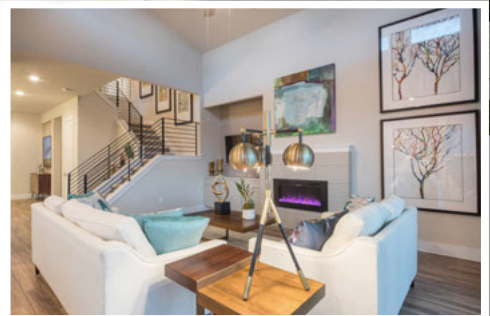
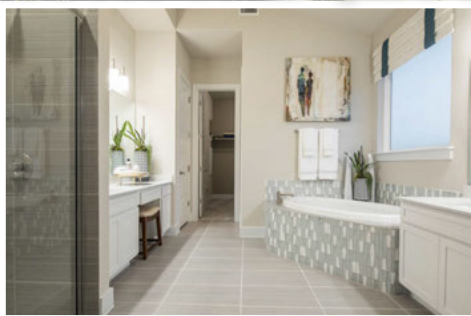
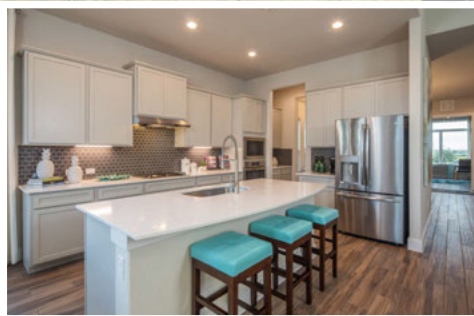




**FROM THE \$250'S**



- **In East Austin, Minutes from Downtown**
- **Floor Plans from 1,597 to 2,923**
- **Located Near Major Tech Employers**
- **Easy Access to 290, Parmer Lane & Hwy 130**

**Visit Our Model!**

11309 American Mustang Loop  
Manor, TX 78653



**Contact:**

**Robert Eckrich**

[RobertE@brohnhomes.com](mailto:RobertE@brohnhomes.com)

(512) 387-7579

