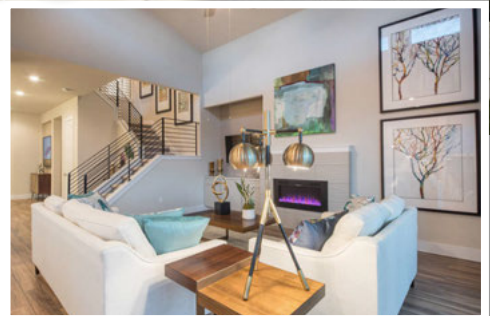
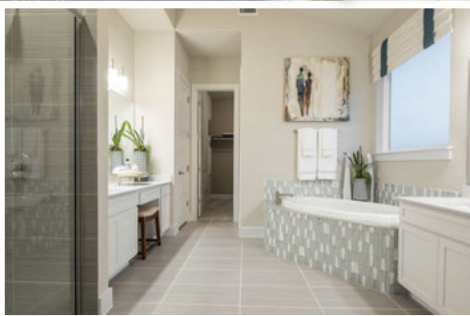
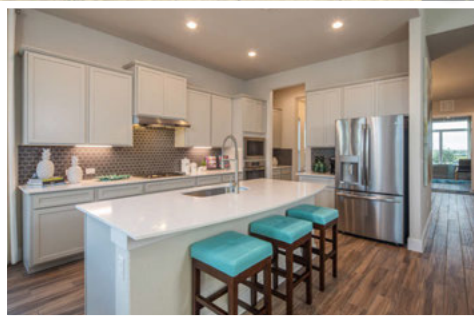




FROM THE \$250'S



- In East Austin, Minutes from Downtown
- Located Near Major Tech Employers
- Floor Plans from 1,597 to 2,923
- Easy Access to 290, Parmer Lane & Hwy 130

Visit Our Model!

11309 American Mustang Loop
Manor, TX 78653



Contact:

Robert Eckrich
RobertE@brohnhomes.com
(512) 387-7579

