



# NEW INVENTORY HOMES!



**DRIPPING SPRINGS  
CALITTERA**  
190 Canal Drive  
**GRANTLEY E**  
MLS# 9937872  
~~WAS \$1,370,900~~  
**NOW \$1,249,900**



**DRIPPING SPRINGS  
CALITTERA**  
243 Bridge Water Loop  
**PALMETTO A**  
MLS# 1713909  
~~WAS \$1,074,900~~  
**NOW \$999,900**



**DRIPPING SPRINGS  
CALITTERA**  
257 Bridge Water Loop  
**BANCROFT B**  
MLS# 1426793  
~~WAS \$1,199,900~~  
**NOW \$1,099,900**



**LAGO VISTA  
THE HOLLOW**  
7225 Destination Way  
**COLINAS II C**  
MLS# 4466980  
~~WAS \$1,599,900~~  
**NOW \$1,299,900**



**LIBERTY HILL  
NORTHGATE RANCH**  
105 Rickard Drive  
**KENWOOD D**  
MLS# 5791693  
~~WAS \$1,374,900~~  
**NOW \$1,249,900**



**SUMLIN  
THE OAKS AT SAN GABRIEL**  
125 Bull Ridge Trail  
**SUMLIN B**  
MLS# 4289506  
~~WAS \$999,900~~  
**NOW \$849,900**



**LAKEWAY  
ROUGH HOLLOW**  
418 Sittlington Lane  
**ROSEMADE A**  
MLS# 4392791  
~~WAS \$1,099,900~~  
**NOW \$849,900**



**LAKEWAY  
ROUGH HOLLOW**  
514 Elworth Path  
**ROSEMADE A**  
MLS# 6128515  
~~WAS \$1,199,900~~  
**NOW \$899,900**



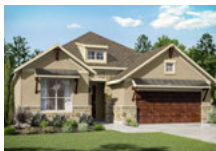
**LEANDER  
TRAVISSO**  
3028 Soldato Way  
**MAXWELL B**  
MLS# 1390288  
~~WAS \$2,249,900~~  
**NOW \$1,949,900**



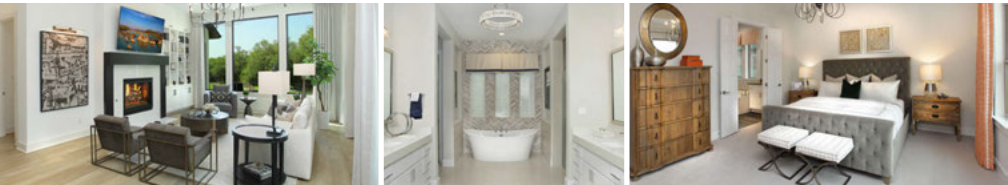
**GEORGETOWN  
WOLF RANCH SOUTH FORK**  
236 Running Fawn  
**OLYMPIA B**  
MLS# 7898912  
~~WAS \$1,019,900~~  
**NOW \$899,900**



**GEORGETOWN  
WOLF RANCH**  
129 Magnolia Spring Drive  
**BRYNLEE E**  
MLS# 6571834  
~~WAS \$949,900~~  
**NOW \$699,900**



**GEORGETOWN  
WOLF RANCH SOUTH**  
233 Running Fawn  
**AUBRIANNA A**  
MLS# 1720396  
~~WAS \$849,900~~  
**NOW \$719,900**



\*Your 4% commission will apply on the base price of build-to-order homes. For inventory homes your commission will be 4% of the advertised price or contract price, whichever is lower. Commission will be paid to the registered Realtor at closing on Drees homes. Drees reserves the right to change or withdraw this program at any time without notice. For complete details see a Drees Market Manager.

