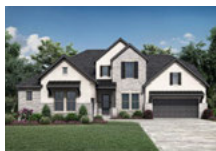
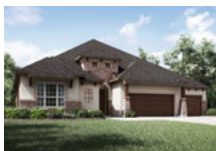




NEW INVENTORY HOMES!



DRIPPING SPRINGS CALITTERA
190 Canal Drive
GRANTLEY E
MLS# 9937872
~~WAS \$1,370,900~~
NOW \$1,249,900



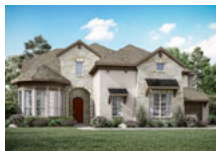
DRIPPING SPRINGS CALITTERA
243 Bridge Water Loop
PALMETTO A
MLS# 1713909
~~WAS \$1,074,900~~
NOW \$999,900



DRIPPING SPRINGS CALITTERA
257 Bridge Water Loop
BANCROFT B
MLS# 1426793
~~WAS \$1,199,900~~
NOW \$1,099,900



LAGO VISTA THE HOLLOW
7225 Destination Way
COLINAS II C
MLS# 4466980
~~WAS \$1,599,900~~
NOW \$1,299,900



LIBERTY HILL NORTHGATE RANCH
105 Rickard Drive
KENWOOD D
MLS# 5791693
~~WAS \$1,374,900~~
NOW \$1,249,900



SUMLIN THE OAKS AT SAN GABRIEL
125 Bull Ridge Trail
SUMLIN B
MLS# 4289506
~~WAS \$999,900~~
NOW \$849,900



LAKEWAY ROUGH HOLLOW
418 Sittlington Lane
ROSEMEADE A
MLS# 4392791
~~WAS \$1,099,900~~
NOW \$849,900



LAKEWAY ROUGH HOLLOW
514 Elworth Path
ROSEMEADE A
MLS# 6128515
~~WAS \$1,199,900~~
NOW \$899,900



LEANDER TRAVISSO
3028 Soldato Way
MAXWELL B
MLS# 1390288
~~WAS \$2,249,900~~
NOW \$1,949,900



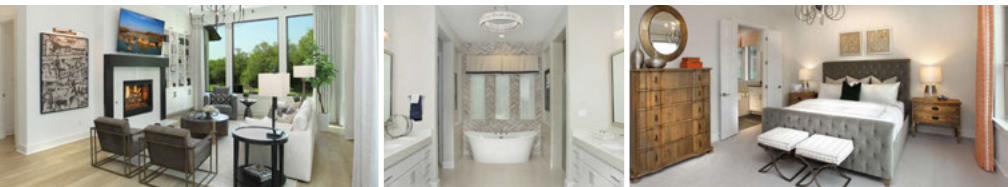
GEORGETOWN WOLF RANCH SOUTH FORK
236 Running Fawn
OLYMPIA B
MLS# 7898912
~~WAS \$1,019,900~~
NOW \$899,900



GEORGETOWN WOLF RANCH
129 Magnolia Spring Drive
BRYNLEE E
MLS# 6571834
~~WAS \$949,900~~
NOW \$699,900



GEORGETOWN WOLF RANCH SOUTH
233 Running Fawn
AUBRIANNA A
MLS# 1720396
~~WAS \$849,900~~
NOW \$719,900



*Your 4% commission will apply on the base price of build-to-order homes. For inventory homes your commission will be 4% of the advertised price or contract price, whichever is lower. Commission will be paid to the registered Realtor at closing on Drees homes. Drees reserves the right to change or withdraw this program at any time without notice. For complete details see a Drees Market Manager.

