



New Homes at Palomino

MANOR, TX | FROM THE HIGH \$200s

Jesseca Poe

jlpoe@drhorton.com | 737-444-5812

Cindy Gerig

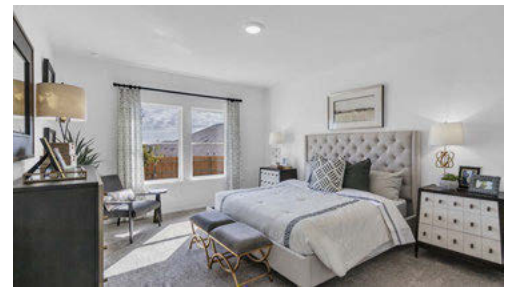
clgerig@drhorton.com | 512-663-1917

Palomino

14825-B Afleet Alex Street
Manor, TX 78653

Welcome to Palomino! Discover beautiful new homes starting in the high \$200s nestled in the Texas Hill Country

- 4 Miles From Downtown Manor
- Stainless Steel Appliances
- Granite Kitchen Countertops
- Full Yard Sod With Irrigation
- Easy Access To Major Roads



Applies to Palomino Community in Austin Division Only. Prices, plans, features, options and co-broke are subject to change without notice. Additional restrictions may apply. Square footages are approximate. Prices shown are base home prices and do not include closing cost and fees, modifications to plans and custom features which may substantially affect final cost of the home. Homes are subject to availability. Furnishings and decorative items not included with the home purchase.