






Call (512) 645-2145 to schedule an appointment.

LAST HOME IN SMITHFIELD

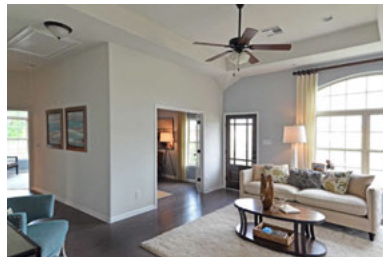
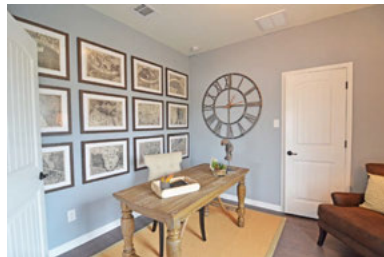
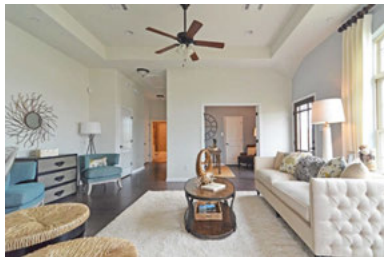
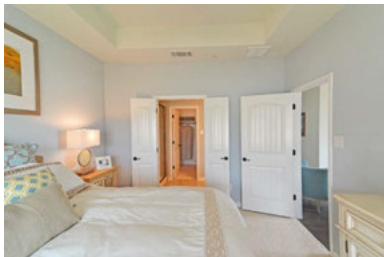
A BEAUTIFUL SOUTH AUSTIN TOWNHOME

*Priced
Starting From*
\$285,815
Call Now!

11700 Akita Path

- | | | |
|---|--|---|
|  2 Bedrooms |  1 Story |  1,329 SF (Hemingway) |
|  2 Bathrooms |  End Unit |  MOVE-IN READY! |

This single-story end unit greets you with an open living space, tray ceilings, and a multi-functional study space. Tons of natural light shines through double-paned windows and the kitchen looks out to the family room for easy entertaining. Smithfield is a true lock and leave community with close proximity to local restaurants, shopping, and downtown!



Visit [MyMilestone.com](https://www.milestone.com) or call (512) 645-2145 for more info.

Offer, prices, plans, specifications and availability are subject to change and/or cancellation at any time without prior notice. Please contact community sales counselor for additional details. Featured picture is similar home product.




MILESTONE
COMMUNITY BUILDERS