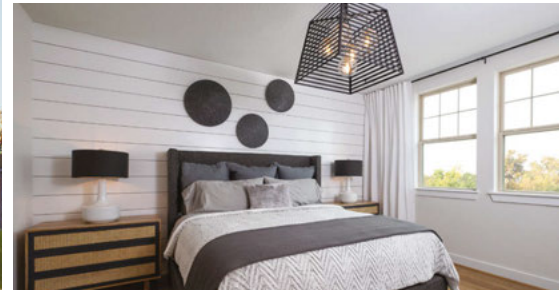


SIP ON THE LAKE



MODEL GRAND OPENING EVENT



Tour the newest Ashton Woods model home in Lake Travis and enjoy a day by the water at this Realtor-only event.

THURSDAY, AUGUST 22 FROM 1:00 PM TO 4:00 PM

16405 Sydney Carol Lane, Austin, TX 78734

Join us for the grand opening of the newly-staged home at Canopy at Hudson Bend, and experience an afternoon of lakeside living for yourself on Lake Travis. See the community your clients will love, with beautiful design finishes, exceptional lake views and a lock-and-leave lifestyle. You'll enjoy complimentary summer cocktails as you explore the model and this community. Spots are limited, so RSVP today. At Canopy at Hudson Bend, your clients will love the possibilities.

Don't miss this exciting Realtor-only event

- Our Studio design expert will be on-hand throughout the tour
- Enjoy Summer cocktails including sangria
- Enter to win a \$250 Hill Country Galleria gift card by sharing a photo or video during the event on social media and tagging @ashtonwoodshomes*

SPOTS ARE LIMITED SO RSVP TODAY

512.957.2914 / ashtonwoods.com/austin

ASHTON  WOODS.

HOME TO INSPIRATION.®

INSPIRATION COLLECTIVE

An exclusive rewards program inspired by you.

As a member of the **Inspiration Collective**, you'll be among the first to preview our most current designs, gain access to exclusive selling tools and earn points to become eligible for monthly prizes.

**Are you registered yet? Sign up today
at AWInspirationCollective.com**

REALTOR PARTNERSHIP



*Prize value estimated at \$250. To enter, eligible individuals ("Entrant") must attend the event on 8.22 from 1:00 PM to 4:00 PM, and share a video or photo on social media at the event, tagging @ashtonwoodshomes. Each Entrant will receive one (1) entry for a chance of winning one (1) prize. Not to be combined with any other offer, promotion or negotiation. The winner of each prize will be selected by random drawing by Ashton Woods. © 2019 Ashton Woods Homes. Ashton Woods Homes reserves the right to change plans, specifications and pricing without notice in its sole discretion. Square footage is approximate and floorplans shown are representative of actual floorplans. Window, floor and ceiling elevations are approximate, subject to change without prior notice or obligation, may not be updated on the website, and may vary by plan elevation and/or community. Special wall and window treatments, upgraded flooring, fireplace surrounds, landscape and other features in and around the model homes are designer suggestions and not included in the sales price. All renderings, color schemes, floorplans, maps and displays are artists' conceptions and are not intended to be an actual depiction of the home or its surroundings. Basement options are available subject to site conditions. Homesite premiums may apply. While we endeavor to display current and accurate information, we make no representations or warranties regarding the information set forth herein and, without limiting the foregoing, are not responsible for any information being out of date or inaccurate, or for any typographical errors. Please see Sales Representative for additional information, including current floorplans. This is not an offer to sell real estate, or solicitation to buy real estate, in any jurisdiction where prohibited by law or in any jurisdiction where prior registration is required, including New York and New Jersey. 7.19

