

Call (512) 645-2145 to schedule an appointment.


LAST HOME IN SMITHFIELD


A BEAUTIFUL SOUTH AUSTIN TOWNHOME

*Priced
Starting From*
\$291,815
Call Now!

11700 Akita Path

 2 Bedrooms

 1 Story

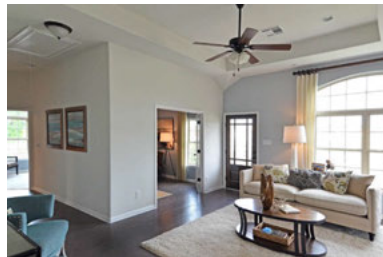
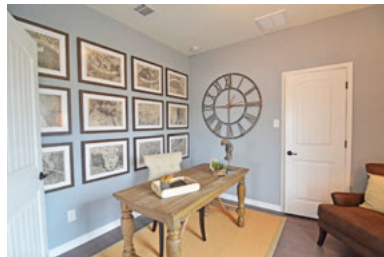
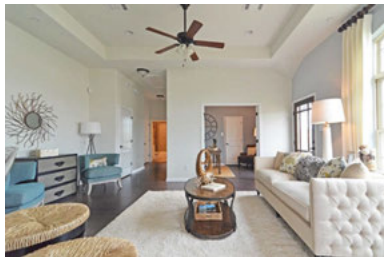
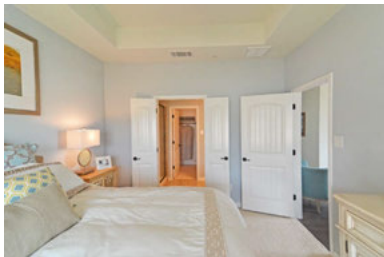
 1,329 SF (Hemingway)

 2 Bathrooms

 End Unit

 **MOVE-IN READY!**

This single-story end unit greets you with an open living space, tray ceilings, and a multifunctional study space. Tons of natural light shines through double-paned windows and the kitchen looks out to the family room for easy entertaining. Smithfield is a true lock and leave community with close proximity to local restaurants, shopping, and downtown!



Visit MyMilestone.com or call (512) 645-2145 for more info.

Offer, prices, plans, specifications and availability are subject to change and/or cancellation at any time without prior notice. Please contact community sales counselor for additional details. Featured picture is similar home product.




MILESTONE
COMMUNITY BUILDERS