







Call (512) 645-2145 to schedule an appointment.

# LAST HOME IN SMITHFIELD

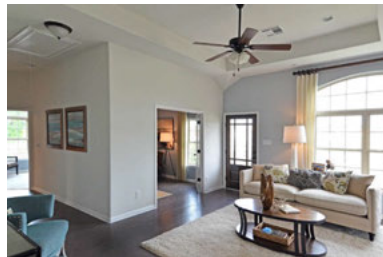
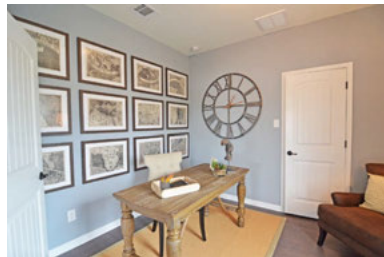
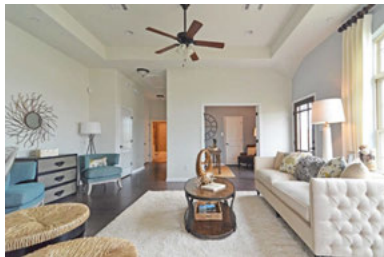
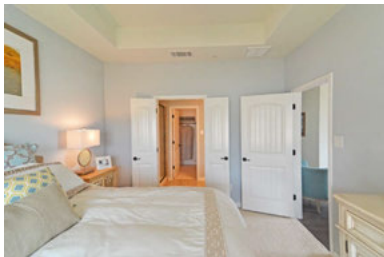
A BEAUTIFUL SOUTH AUSTIN TOWNHOME

*Priced  
Starting From*  
**\$291,815**  
*Call Now!*

## 11700 Akita Path

- |   |  |   |
|---|--|---|
|  2 Bedrooms  |  1 Story  |  1,329 SF (Hemingway)  |
|  2 Bathrooms |  End Unit |  <b>MOVE-IN READY!</b> |

This single-story end unit greets you with an open living space, tray ceilings, and a multifunctional study space. Tons of natural light shines through double-paned windows and the kitchen looks out to the family room for easy entertaining. Smithfield is a true lock and leave community with close proximity to local restaurants, shopping, and downtown!



Visit [MyMileStone.com](http://MyMileStone.com) or call (512) 645-2145 for more info.

Offer, prices, plans, specifications and availability are subject to change and/or cancellation at any time without prior notice. Please contact community sales counselor for additional details. Featured picture is similar home product.



  
**MILESTONE**  
COMMUNITY BUILDERS